



Let's get you signed in.

Visit cda.basiconline.com and select

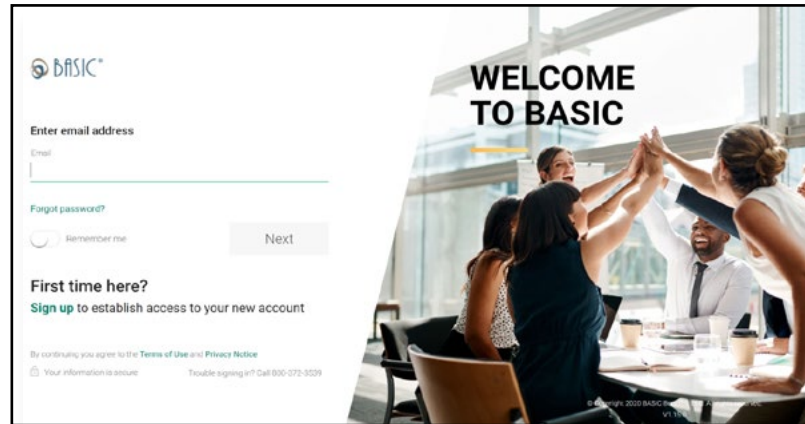
Sign up under the "First time here" section



The first time you access the new Consumer Driven Accounts system, you need to sign up.

To sign up, find "First time here" under the section that applies to you and select sign up. Follow the instructions to sign up for your new benefit system.

Once you have signed up, use the sign in function to access your account(s) going forward. Select sign in, enter your email address, and click next. On the next screen, enter your password and select sign in.



TIP

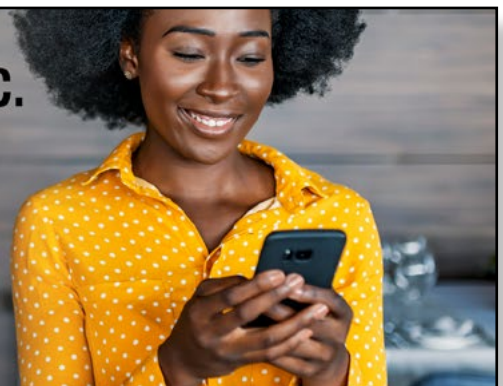


It is important to use the email address your employer has on file for you. If the one you entered is not recognized, please contact the BASIC Customer Service Department at 1-800-372-3539 for assistance.

Benefits should be simple. **Keep it BASIC.**

No matter where you are, the BASIC Benefits app gives you exactly that experience.

Smart. Easy. Connected.



*Standard message and data rates may apply.

The BASIC Card is issued by MetaBank, Member FDIC, pursuant to license by Mastercard International Incorporated. Mastercard is a registered trademark, and the circles design is a trademark of Mastercard International Incorporated.